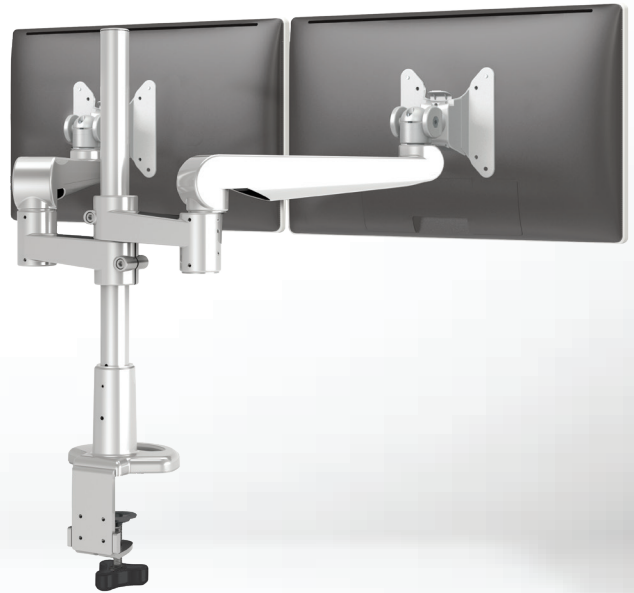




Evolve2™ F

Single Fixed Monitor Arm



Model Number

- EVOLVE2-F-SLV
- EVOLVE2-F-BLK
- EVOLVE2-F-WHT

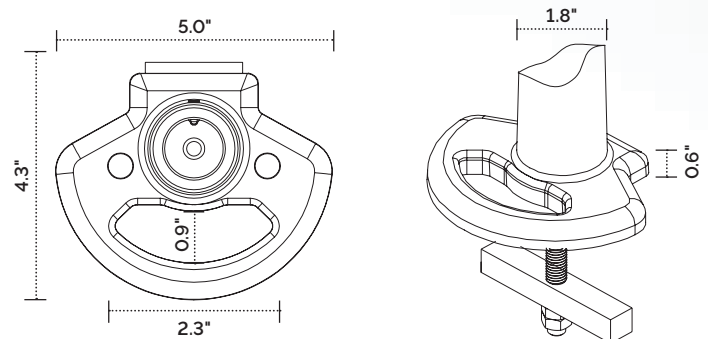
Evolve Monitor Arm Key

- F - Fixed Monitor Arm
- M - Motion Monitor Arm
- S - Slider Mount

Evolve For Every Need

- As workstation needs change, so can the Evolve configurations. Additional components sold separately.

Call our Customer Service Department for comparability on pricing for custom configurations.



Product Specs

- Manual height adjustment
- Recommended for worksurfaces 30.0\" deep or less
- 18.2\" arm extension
- 4.1\" arm retraction
- +90°/-25° monitor tilt
- ±90° rotation
- Up to 20.0 lb. weight capacity
(per arm)
- 18.0\" pole height
(includes base)
- VESA 75mm/100mm quick release
- 180° lock-out feature
- Desk clamp and grommet mount included
- 28.0\" max. monitor width
Bezel measured left to right
Max. width is contingent on weight capacity
- Meets or exceeds BIFMA x5.5 guidelines

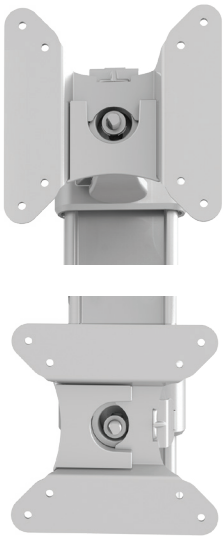
Evolve2™F



VESA quick release



integrated allen key storage



landscape/portrait rotation



grommet mount



desk clamp



cable management

